

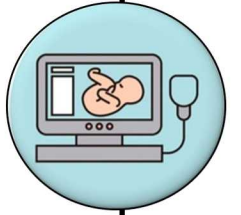
Researchers at the University of Toronto are doing a study about the reproductive health of people with disabilities in Ontario



Am I eligible to participate?

You may be able to be part of this study if you:

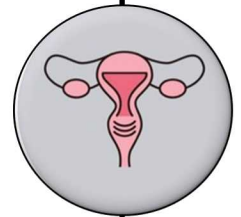
- Identify or may be labeled as having one (or more) of the following disabilities:
 - **physical** (e.g., cerebral palsy, muscular dystrophy, spina bifida, SCI)
 - **intellectual** or **neurodevelopmental** (e.g., autism, Down syndrome, FASD)
- Identify as a woman, trans, or non-binary
- Are between the ages of 18 and 44 years old
- Live and receive health care services in Ontario



People who **have** been pregnant and people who **have not** been pregnant are eligible to participate.

What do I have to do?

You will be asked to take part in an interview about your reproductive health, including your thoughts about having or not having (more) children, where you get information about reproductive health, and your



relationships. The interview will take 1-2 hours and be done over the phone or Zoom at a time that works for you. Your choice to participate will not impact any of the services you use now or later.

What are the benefits of participating?

You can help us understand the reproductive health needs and experiences of people with disabilities and how to better support their reproductive life choices. You will get a \$50 gift card as a thank you for your participation.

I am interested! Who do I contact?

Please contact Lesley at lesley.tarasoff@utoronto.ca



We understand that not everyone identifies as having a disability or feels the label of disability applies to them. You do not need to have an official medical diagnosis to participate in this study.

